



Instructions for Baking & Decorating Elmo Cake

PLEASE READ THROUGH INSTRUCTIONS BEFORE YOU BEGIN. IN ADDITION, to decorate cake you will need:

- Wilton Decorating Bags and Couplers or Parchment Triangles (instructions included with all bags)
- Decorating tip 12 (alternate uses tips 3, 16)
- Wilton Icing Colors in No-Taste Red, Orange, Black
- Wilton Cake Board, Fanci-Foil Wrap
- Cornstarch
- One 2-layer cake mix or ingredients to make favorite layer cake recipe
- Buttercream Icing (recipe included)



We recommend washing pan in hot, soapy water.

Wilton Method Cake Decorating Classes
Call: 800-942-8881

© 2002 Wilton Industries, Inc.
Woodridge, IL 60517
www.wilton.com

Stock No. 2105-3461

©2002 Sesame Workshop. "Sesame Street" and its logo are trademarks of Sesame Workshop. All rights reserved. www.sesamestreet.com

To Decorate Spatula-Decorated Elmo

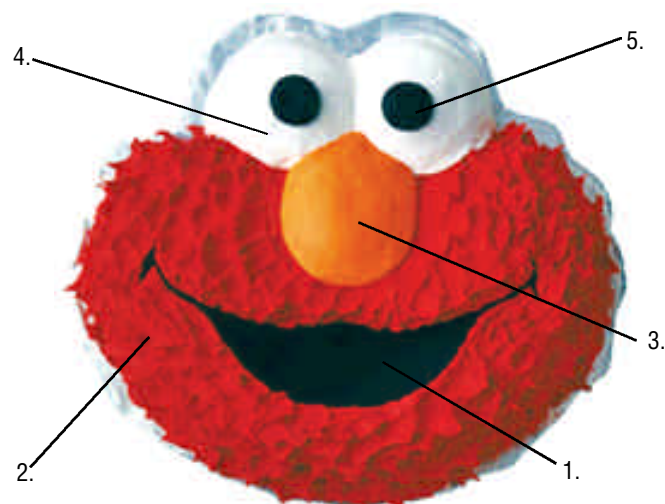
You will need Wilton Icing Colors in No-Taste Red, Orange and Black and Decorating Tip 12. We suggest you tint all icings at one time, while the cake cools. Refrigerate icing in covered containers until ready to use.

MAKE 3 CUPS OF BUTTERCREAM ICING:

- Tint 1 1/2 cups red/orange (small amount) combination
- Tint 1/2 cup black (thinned with 1 1/2 teaspoons corn syrup)
- Tint 1/4 cup orange/red (small amount) combination
- Reserve 3/4 cup white

Spatula-Decorated Elmo. Decorate in numerical order:

1. Ice mouth and smile lines smooth with thinned black icing
2. Using spatula, ice face area fluffy with red/orange icing combination
3. Using spatula, ice nose smooth with orange/red icing combination
4. Using spatula, ice eyes smooth with white icing (smooth with finger dipped in cornstarch)
5. Pipe in pupils with tip 12 in black icing (smooth with finger dipped in cornstarch)



To Decorate Star-Decorated Elmo

You will need Wilton Icing Colors in No-Taste Red, Orange and Black and Decorating Tips 3 and 16. We suggest you tint all icings at one time, while the cake cools. Refrigerate icing in covered containers until ready to use.

MAKE 3 CUPS OF BUTTERCREAM ICING:

- Tint 1 1/2 cups red/orange (small amount) combination
- Tint 1/2 cup black (thinned with 1 1/2 teaspoons corn syrup)
- Tint 1/4 cup orange/red (small amount) combination
- Reserve 3/4 cup white

Star-Decorated Elmo. Decorate in numerical order:

1. Use tip 3. Fill in mouth with black icing (smooth with finger dipped in cornstarch). Outline smile using tip 3 with black icing
2. Use tip 3. Fill in nose with orange/red icing combination (smooth with finger dipped in cornstarch)
3. Use tip 3. Fill in eyes with white icing (smooth with finger dipped in cornstarch). Fill in pupils with tip 3 in black icing (smooth with finger dipped in cornstarch)
4. Use tip 16. Cover face with stars with red/orange icing combination



Cake Release

For perfect, crumb-free cakes!

No need to grease and flour your baking pan – Cake Release coats in one step. Simply spread Cake Release lightly on pan bottom and sides with a pastry brush and fill with batter. Cakes release perfectly without crumbs every time, giving you the ideal surface for decorating. Now in convenient dispensing bottle. Certified Kosher. 8 oz.

702-6016



For more Decorating Techniques & Tips

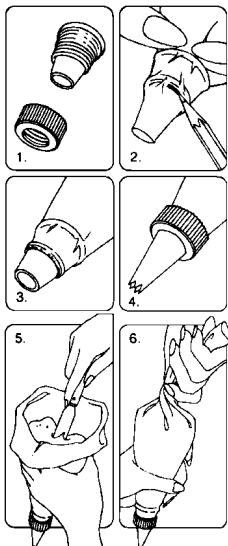
Visit our website at www.wilton.com -
Learn To Decorate - Basic Decorating Lessons.

Using Your Decorating Bag and Coupler

You can make many different designs with just one decorating bagful of icing by using the Wilton Featherweight or Disposable Decorating bags and coupler and changing decorating tips.

Just follow these steps:

1. Screw ring off coupler to expose series of tiny threads 1/2 in. above coupler base.
2. Force coupler base as far down into decorating bag as it will go. Then mark where bottom thread of coupler shows through bag; remove coupler and trim bag at pencil mark with a pair of scissors.
3. Reposition coupler in bag and push end through opening to expose bottom two threads.
4. Position decorating tip over coupler and screw ring in place to secure. To change tips, unscrew ring, replace tip and replace ring.
5. To fill, cuff open end of bag over your hand and insert icing with a spatula. Fill bag no more than half full.
6. To close, unfold cuff and twist top of bag shut. Hold twist between your thumb and forefinger. Note: You can eliminate any air bubbles that may have formed by squeezing bag gently over icing bowl until air is released. Important: Be sure to wash the Featherweight bag in hot soapy water, then rinse and dry after every use. A degreaser can make clean-up easier.



Baking Instructions

Preheat oven to 350°F for temperature per recipe directions. Your cake will unmold easily, without sticking, when you prepare the pan properly. Grease the inside of pan using a pastry brush and solid vegetable shortening (do not use butter, margarine or liquid vegetable oil). Spread the shortening so that all indentations are covered. Sprinkle about 2 Tablespoons flour inside pan and shake so that flour covers all greased surfaces. Turn pan upside down and tap lightly to remove excess flour. If any shiny spots remain, touch up with more shortening and flour to prevent cake from sticking. (You can use vegetable oil pan spray or vegetable oil pan spray with flour, in place of solid shortening and flour or use **Wilton Cake Release**, for perfect, crumb-free cakes!).

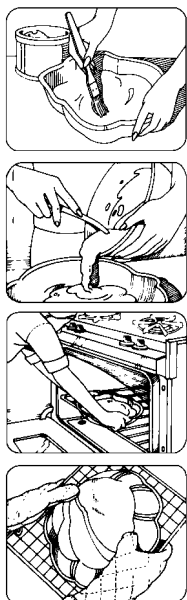
Make one 2-layer cake mix according to package or recipe directions. Pour the cake batter into pan, and if necessary, spread the batter around with a spatula to fill all areas of the pan evenly. Be careful not to touch sides or bottom of pan. Bake cake on middle rack of 350°F oven for 30-40 minutes or until cake tests done according to recipe directions.

Remove cake from oven and cool on cake rack for 10 minutes. While the cake is still in the pan, carefully slice off the raised center portion of the cake. This allows the cake to sit more level and helps prevent cracking. To remove cake from pan, place cooling rack against cake and turn both cake rack and pan over. Lift pan off carefully. Cool cake at least one hour. Brush loose crumbs off cake.

To transfer cake to serving board, hold a cake board against cake and turn both cake and rack over. Lift off rack. Hold another board against bottom of cake and turn cake over. Be sure to hold cake, rack and board close together while turning to prevent cake from cracking.

Using Parchment Bags

Parchment bags made from parchment paper triangles give you more versatility and the convenience of one-time use. Follow package directions. To "pipe-in" using a cut parchment bag, cut the point of the bag to desired opening.



Decorating With Wilton Icings

Wilton Frosting Mix: You will need 2-3 packages of Creamy White Icing Mix. To prepare, follow package directions. Each package makes about 2 cups icing. Excellent for tinting any shade required. If you're using another type of frosting mix, you will need three 15.4 oz. packages of the creamy vanilla type that will frost two 8 in. or 9 in. layers. For each package of frosting mix, use four less teaspoons water than package directs. Each package makes about 1 3/4 cups icing. Do not refrigerate icing before decorating. Cake may be refrigerated after it is iced.

Wilton Ready-to-Use Decorator Icing: You will need approximately 2-3 cans of our delicious white icing. Each 16.5 oz. can holds about 2 cups. It's ideal for all of your decorating needs – frosting, decorating and flower making.

Making Buttercream Icing

The thick, but creamy texture of this flavorful icing makes it ideal for decorating*. For best results, keep icing bowl in refrigerator when not in use. It can be refrigerated in an airtight container for up to 2 weeks. Rewhip before using. YIELD: 3 CUPS.

1/2 cup solid vegetable shortening	2 tablespoons milk
1/2 cup butter or margarine	1 tsp. Wilton Clear Vanilla Extract
4 cups (1 lb.) sifted confectioners' sugar	

Cream butter and shortening with electric mixer. Add vanilla. Gradually add sugar, one cup at a time, beating well on medium speed. Scrape sides and bottom of bowl often. When all sugar has been mixed in, icing will appear dry. Add milk and beat at medium speed until light and fluffy.

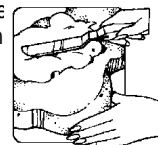
*To thin for icing cake, add a small amount of light corn syrup.

Coloring Your Icing

Wilton Icing Colors are best for decorating because they are concentrated and give the deepest, most vivid icing colors. Use a toothpick to swirl icing color into icing, then mix well. Add color gradually until you get the icing color you desire.

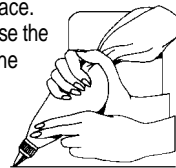
Icing Smooth With A Spatula

With a spatula, place icing on cake. Spread icing over area to be covered. For a smooth effect, run spatula lightly over the icing in the same direction, blending it in for an even look. For a fluffy effect, swirl icing into peaks using the edge of the spatula.



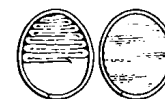
To Make Outlines

Use tip 3 or 12. Hold bag at a 45° angle and touch tip to surface. Squeeze at starting point so that icing sticks to surface. Now raise the tip slightly and continue to squeeze. The icing will flow out of the tip while you direct it along surface. To end an outline, touch tip back to surface, stop squeezing and pull away. If icing ripples, you are squeezing bag too hard. If icing outline breaks, you are moving bag too quickly or icing is too thick.



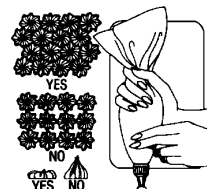
To Outline & Pipe-In

After outlining, using the same tip, squeeze out rows of lines to fill area. Pat icing down with fingertip dipped in cornstarch or smooth with dampened art brush.



To Make Stars

Use tip 16. Hold bag straight up and down (see illustration) with tip 1/8 in. above surface. Squeeze until a star is formed, then stop pressure and pull tip away. Your stars will be neatly formed only if you stop squeezing before you pull the tip away.



Wilton Method Decorating Classes

Discover The Fun
of Cake Decorating!

Find Classes Near You!

In U.S.A., Call **800-942-8881** Or visit
our website at www.wilton.com
In Canada, call (416) 679-0790 x200 Or E-mail:
classprograms@wilton.ca

